

Children Looked After – The Role of the Corporate Parenting Board

Presentation by

Bob Stott, Director of Permanence, Protection and
Schools

County Councillor Sue Prynne, Chair of the Corporate
Parenting Board

&

LINX (Lancashire's Children in Care Council)

14 November 2014

Aims

To outline the:

- Purpose
- Priorities
- Life in Care
- Achievements
- Continuous Improvement

Purpose of the Corporate Parenting Board

- Promote awareness
- Secure commitment & contribution
- Set high expectations & hold to account
- Listen & involve children and young people
- Oversee and monitor performance
- Consider the outcomes of regulatory visits and inspection reports
- Ensure strategies join up and prioritise children looked after
- Celebrate the achievements of children looked after
- Ensure adequate resources provided
- Undertake visits & receive feedback
- Comply with UN Convention on Rights of Child

So What Have We Achieved?

Words to Actions to Outcomes

Action	Difference Made
Celebrating Achievement	Supported annual celebration event
Re-established/restructured Children in Care Council	Established integrated links with Youth Councils, achieved wider representation
Publicising needs of Young People and the Board	Positive feedback from elected members who better understand role of a Corporate Parent
Scrutiny function	Elected members independently evaluate residential homes against the Board's priorities Scrutinise Adoption Activity Days
Young People's Engagement	Young People have more involvement in the Board meetings and play an active role in setting agenda and leading discussions
Pupil Premium	Continue to raise awareness and challenge schools
Change of Format to Meetings	Young people are now allocated the first half of the meeting and feedback from them is that this is working well

How the Board Works

- Bi monthly evening meetings
- Agenda linked to agreed priorities
- Active involvement of young people
- Young people set the agenda and chair one meeting per year
- Elected members meet prior to the meeting
- Young people meet prior to the meeting
- Elected member champions
- Working group support
- Presentation, reports, interactive activity and celebration
- Reports to the Cabinet Member for Children, Young People and Schools

Priorities - What our young people want

Lancashire County Pledge
You told us how you
wanted us to care for you and we
promise we will...

Handle Speakers

Helps you carry it
- when you work with us
you should always talk and
think about the pledge.

Loud and clear -
everyone knows about
the pledge.



Radar

We should always be on the radar - we should not be forgotten and everything should be in place when our placement is taken up.

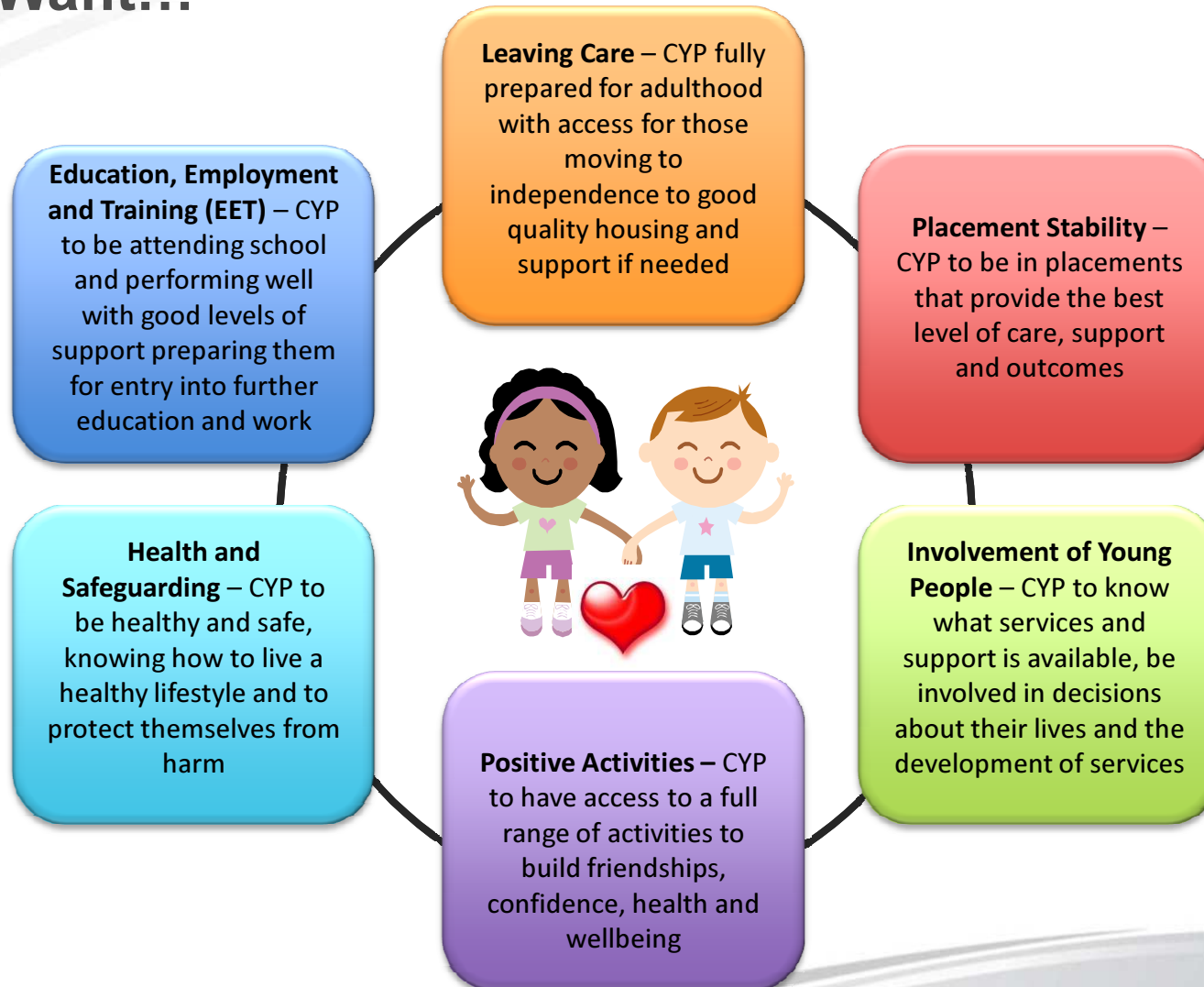
Batteries

The things that make it work - everyone is treated fairly, its child centred, the Government have made a pledge to us, that we get plenty of notice before things happen.

Tuners

Everyone who works with us should be tuned into what we think - we should be involved in decisions and have a say on what services we need.

Priorities - Corporate Parenting Board – We Want...



Children Looked After need to be listened to

Life for us in care in Lancashire

Being in care: What is different for us?

It's important to remember that...

... “everyone’s in care for different reasons” and that “everyone’s an individual”.

All children and young people have different needs but for those that are in care there are some things that are different. Our experiences are different and we have different needs.

Some things about Children Looked After (CLA) that maybe people do not think about...

Your home or placement:

- More than one placement.
- Some people might feel like it is not their home.
- Living with other young people.
- Different area to where you grew up.

The people:

- Lots of people involved in making decisions for you.
- Sometimes we are the last to find out important information.
- It is not your family – someone is paid to look after you.
- You do not always have strong relationships with the people in your life.

Rules:

- Some people need CRB checks for your friends' parents.
- Photographs.

Leaving care:

- Moving into independence – feeling too young.
- Provision when leaving care is reduced.

Some other activities...

- Lancashire Youth Council:
 - The CiCC is now part of the youth council structure.
 - Young people from the CiCC attend campaign nights and represent CLA at the exec night and at cabinet.
- Young people from CiCC attend monthly PULSE meetings – The Health and Well-being board for young people in Lancashire
- Training of LCC staff.
- Interviewing new staff and volunteers.
- Commissioning e.g. choosing new residential units for CLA.

Some things we like...

We like being involved in decisions made about us.

Having the CiCC now is good as it gives the opportunity for children and young people to have their voices heard.

A young person said, "I'm proud to be part of the CiCC, I have met some great people and my confidence is growing. I like having the opportunity to make a difference for all young people in care and leaving care".

Some things we want to change...

- “I know there are rules... but reasons behind decisions are not always made clear”.
- More support when leaving care.
- The CPB is good but difficult for young people to understand but we like that young people are able to be involved.
- Children and young people would like more child friendly information.

Life in Care – Facts

Question	Answer
How many children and young people does Lancashire County Council have in its care?	Number has risen over last year and stood at 1,622 at 31 September 2014. Rate per 10,000 at 66.7 is above the national average (60.0), but below the statistical neighbour average (67.6) and well below the regional rate (79.0)
What is the peak age for children/young people coming into our care?	Children and young people aged under 10 years account for over half (51%) of those in our care but the peak ages for entering care are 0 - 1 years old
Where might children in our care live?	With foster carers, in a children's home, with relatives/family friends
What proportion of these live with foster parents?	Around three quarters (69%) are in foster care
What is the main reason why children and young people come into care?	Abuse and neglect along with family stress/problems are the main reasons
How many CLA are also known to the Youth Justice system?	Around 6% of children looked after have cautions/convictions
At what age do Care Orders end?	18 years old – however we know in reality with our own families that ideally young people should stay with foster carers until 21 years old

Life in Care – Facts Cont'd...

TOTAL NUMBERS OF CHILDREN LOOKED AFTER

District Team	Mar 12	Mar 13	Mar 14	Apr 14	May 14	Jun 14	Jul 14	Aug 14	Sept 14	% of Total CLA	% Change v 11/12
Lancaster	119	140	110	113	114	123	137	133	139	10.3%	
Fylde/Wyre	90	94	73	78	77	81	86	87	96	7.1%	
Preston	193	199	178	188	188	184	188	190	196	14.5%	
Chorley/ S Ribble	178	175	153	150	142	143	142	142	147	10.9%	
W Lancs	128	135	118	116	118	121	120	117	123	9.1%	
Hynd/R Valley	185	211	151	147	145	137	133	138	160	11.9%	
Burnley	157	204	219	222	231	226	221	221	232	17.2%	
Pendle	188	221	176	173	169	174	168	120	171	12.7%	
Rosendale	86	103	88	85	83	90	89	84	84	3.2%	
District	1324	1482	1266	1272	1267	1279	1278	1282	1348	83%	
Central teams*	-	-	325	317	299	309	305	306	274	17%	
Lancashire CLA	1324	1482	1591	1589	1566	1588	1583	1588	1622	100%	22.6%

* Where cases on LCS are not assigned to a district CSC team

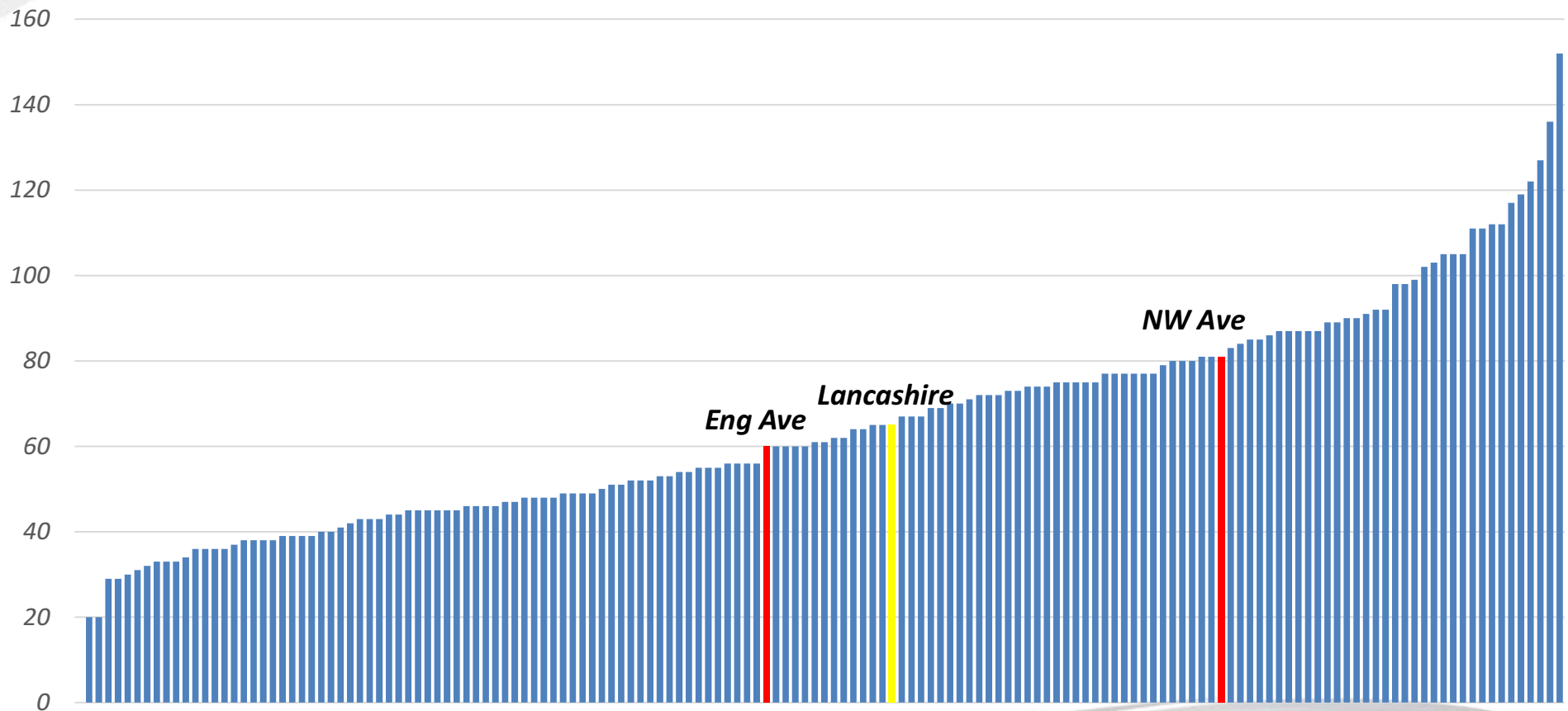
Commencement of LCS

Life in Care – Facts Cont'd...

RATE PER 10,000 (0 – 17) OF CHILDREN LOOKED AFTER									
District	Mar 12	Mar 13	Mar 14	Apr 14	May 14	Jun 14	Jul 14	Aug 14	Sept 14
Lancaster	45.2	53.2	41.8	43.0	43.3	46.8	49.8	50.6	52.8
Fylde/Wyre	26.9	28.1	21.8	23.3	23.0	24.2	25.7	26.0	28.7
Preston	64.2	66.2	59.2	62.5	62.5	61.2	62.5	63.2	65.2
Chorley/ South Ribble	39.5	38.9	34.0	33.3	31.5	31.8	31.5	31.5	32.6
W Lancs	56.7	59.8	52.3	51.4	52.3	53.6	53.1	51.8	54.5
Hyndburn/Ribble Valley	60.4	68.9	49.3	48.0	47.3	44.7	43.4	45.1	52.2
Burnley	80.5	104.6	112.3	113.9	118.5	115.9	113.3	113.3	119.0
Pendle	91.5	107.5	85.6	84.2	82.2	84.7	81.7	82.7	83.2
Rosendale	56.9	68.2	58.3	56.3	55.0	59.6	58.9	55.6	55.6
Lancashire CLA	54.4	60.9	65.4	65.3	64.4	65.3	65.1	65.3	66.7


Commencement of LCS

Children Looked After as at March 2014 (rate per 10,000 population)



Inspection Achievements

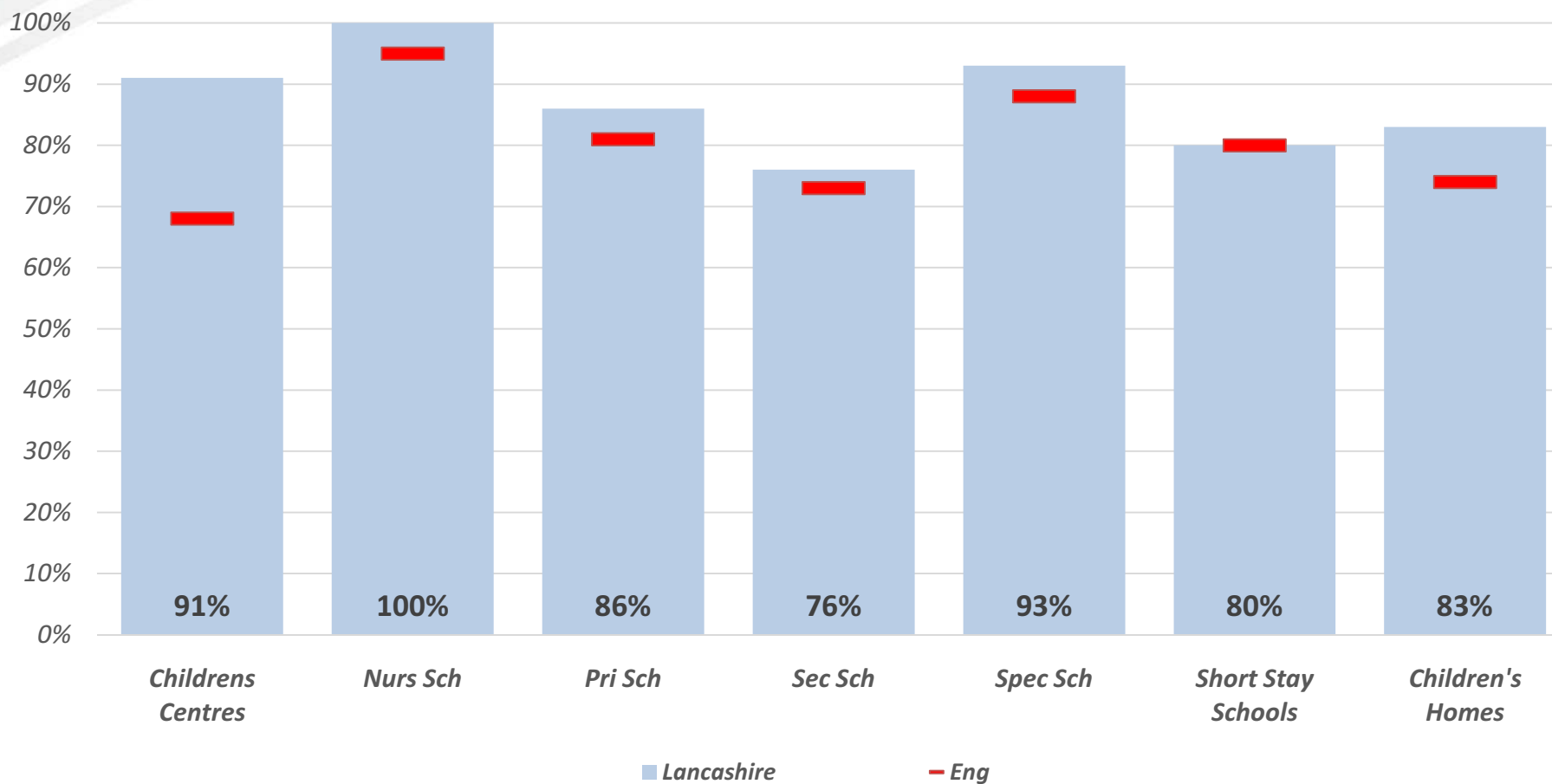
- 83% (15) of LCC residential children's homes and short breaks homes are 'good' or 'outstanding'
- Safeguarding/Looked After Children services evaluated as 'good with outstanding features' (2012)
- Adoption Service evaluated as 'good with outstanding features' (2011)
- Fostering Service evaluated as 'outstanding' (2011)
- YOT inspection strong outcome (2009)
- Annual assessment judgement 'Authority that performs well' (2011)
- There have also been two unannounced inspections which have shown no areas for action
- Recent Ofsted thematic inspection of neglect cases in Lancashire highlighted a lot of good work to identify and tackle neglect (July 2013)

Inspection Facts

	Total Inspected (Jun 14)	Number Judged Good or Outstanding	Number judged as Inadequate
Children Centres	58	53 (91%)	0
Nursery Schools	24	24 (100%)	0
Primary Schools	482	415 (86%)	3 (1.0%)
Secondary Schools	83	63 (76%)	8 (10%)
Special Schools	30	28 (93%)	1 (3%)
Short Stay schools	10	8 (80%)	1 (10%)
Children's Home	18	15 (83%)	0

Inspection Facts

% of settings judged as Good or Outstanding



Comments from the Inspection of Safeguarding and Looked After Children Services - Ofsted March 2012



Corporate parenting arrangements are outstanding, supported by elected members who together effectively champion the needs of looked after children. The council, through the corporate parenting board, has high aspirations for those in its care.

Children and young people who attend the CiCC have good access to senior officers and elected members through their membership on the highly effective youth council as well as the corporate parenting board.

Corporate parenting arrangements are outstanding. This work is supported by elected members who fully know and understand their safeguarding responsibilities in relation to looked after children. They effectively champion the needs of looked after children. Looked after children and young people are empowered through their active involvement with the corporate parenting board and links with the CiCC are very good. Children and young people have many opportunities to make representations including formal arrangements at cabinet level which are helping to influence the shape of services children and young people need and want, such as in the recruitment and training of staff and improvements made to the quality of children's homes.

Performance Data - Strengths

Measure	2013 Perf	Rank (out of 152 LAs)	Quartile	Eng Ave
CLA Adopted in the Year	16%	54	2	14%
Long Term Placement Stability of CLA	72%	32	1	67%
CLA Placed more than 20 miles away from Home	6%	12	1	12%
CLA – Level 4+ Grammar, Punctuation & Spelling at KS2	48%	28	2	45%
CLA – Persistent Absentees	2.9%	7	1	6.1%
CLA – Fixed Term Exclusions	7.7%	17	1	11.3%
Emotional Health of CLA (Strengths and Difficulties Questionnaire)	13.5	45	2	14
CLA Offending	5.9%	52	2	6.2%
CLA – Level 4+ Maths at KS2	62.5%	36	1	55.7%

Validated figs for 2014 will be available at the end of the year

Possible Key Lines of Enquiry for Inspectors based on Performance Data

Measure	Current Perf	2013 Perf	Rank (out of 152 LAs)	Quartile	Eng Ave
CLA Rate Per 10,000	66.7 (Sept 14)	65.0 (2014)	74	3	60.0
% of care leavers in Suitable Accommodation	-	80%	125	4	88%
% of care leavers in Employment, Education or Training	-	55%	95	3	58%
% of CLA 5 achieving GCSEs A* - C	-	28.2%	96*	4	36.6%
% of CLA 5 achieving GCSEs A* - C inc Eng & Maths	-	12.9%	46*	4	15.3%

* Not out of 152 LAs

Validated figs for 2014 will be available at the end of the year

Continuous Improvement

The Board will look to:

- Develop the role of the designated GP
- Further develop the young inspector programme (CLA Young Inspectors)
- Strengthen role of LINX (CiCC) and LINX Junior (primary aged children) and increase its membership
- Active monitoring of the pledge and the CLA Sufficiency Strategy
- Maintain monitoring of all services available to CLA
- Strengthen involvement of Elected Members

Questions?

CPB to LSCB

- How can the LSCB further support the work of the CPB?

LSCB to CPB?

For further information on Corporate Parenting Board,
please visit the [website](#)